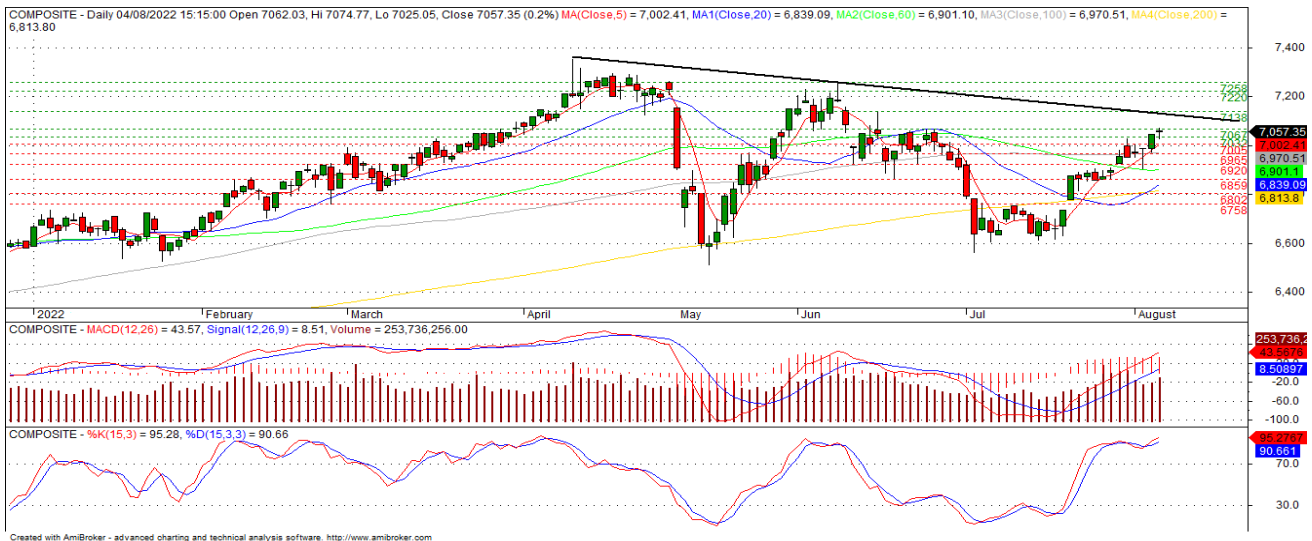


## JCI & Technical Corner

### Jakarta Composite Index (JCI)



JCI pada hari ini kami perkirakan bergerak **MIXED MENGUAT** dengan range 7,005 – 7,102. JCI bertahan di atas Resistance 7,032 berpeluang mencoba next Resistance 7,067 dan 7,102. Namun, bila JCI tidak bertahan di atas Resistance 7,032, akan menguji Support 7,005 dan 6,965.

Support : 7,005 – 6,965

Resistance : 7,067 – 7,102

### Review and Update of “Weekly Recommendation” Strategy

Stock Recom.	Recommendation	Trading Strategy
BBCA	TAKE PROFIT	BBCA, sudah mencapai target price 7,750 (4/8) kami merekomendasikan Take Profit. Namun, bila BBCA bertahan di atas Resistance 7,750, berpeluang melanjutkan penguatan dengan mencoba next Resistance 7,850 dan 7,950. Indikator Macd mengindikasikan pola Uptrend dan Stoc osc mengindikasikan pola Overbought.
PTBA	REDUCE	PTBA sudah mengenai batas Stop Loss 4,120 (4/8) kami merekomendasikan Reduce terlebih dahulu. PTBA breakdown Support 4,120 berkemungkinan melanjutkan pelemahan dengan menguji next Support 4,080 dan 4,040. Indikator MACD dan Stoc osc mulai membentuk pola Downtrend.
PGAS	HOLD	PGAS breakdown Support 1,655, berpeluang melanjutkan pelemahan dengan menguji next Support 1,625 dan 1,600. Namun, bila PGAS bertahan di atas Support 1,655 berkemungkinan mencoba Resistance 1,680 dan 1,700. Indikator Macd dan Stoc osc mengindikasikan pola Downtrend.

Source: Sinarmas Investment Research

## Technical Corner for 'Daily Recommendation' Strategy

Trading Buy

Semen Indonesia (SMGR)



Last price	: 6,750	Support	: 6,525, 6,425
Target price	: 7,000 (+3,7%)	Resistance	: 6,900, 7,000
Entry price	: 6,750	Stop Loss	: 6,525 (-3,3%)

### Trading Strategy:

**SMGR**, breakout Resistance 6,600, berpotensi melanjutkan penguatan dengan mencoba next Resistance 6,900 dan 7,000. Namun, bila **SMGR** tidak bertahan diatas Resistance 6,600, akan menguji Support 6,525 dan 6,425. Indikator MACD dan Stoc osc mengindikasikan pola Uptrend.

Spec Buy

Astra Otoparts (AUTO)



Last price	: 1,205	Support	: 1,190, 1,165
Target price	: 1,235 (+3,3%)	Resistance	: 1,220, 1,235
Entry price	: 1,195	Stop Loss	: 1,165 (-2,5%)

### Trading Strategy:

**AUTO**, bertahan pada Resistance 1,205, berpotensi melanjutkan penguatan dengan mencoba next Resistance 1,220 dan 1,235. Namun, bila **AUTO** tidak bertahan diatas Resistance 1,205, akan menguji Support 1,190 dan 1,165. Indikator MACD dan Stoc osc mengindikasikan pola Uptrend.

## Technical Corner for 'Daily Recommendation' Strategy

**BOW**

**Bank Negara Indonesia (BBNI)**



Last price	: 8,000	Support	: 7,825, 7,725
Target price	: 8,175 (+3,2%)	Resistance	: 8,175, 8,300
Entry price	: 7,925	Stop Loss	: 7,725 (-2,5%)

### Trading Strategy:

**BBNI**, breakdown Resistance 8,050, berpeluang menguji Support 7,825 dan 7,725. Namun, bila **BBNI** bertahan diatas Resistance 8,050, akan mencoba next Resistance 8,175 dan 8,300. Indikator MACD mengindikasikan pola Uptrend dan Stoc ocs mengindikasikan pola Overbought.

**BOW**

**Puradelta Lestari (DMAS)**



Last price	: 169	Support	: 165, 160
Target price	: 174 (+5,5%)	Resistance	: 174, 177
Entry price	: 165	Stop Loss	: 160 (-3,0%)

### Trading Strategy:

**DMAS**, breakout Resistance 167, berpeluang melanjutkan penguatan dengan mencoba next Resistance 174 dan 177. Namun, bila **DMAS** tidak bertahan diatas Resistance 167, akan menguji Support 165 dan 160. Indikator MACD dan Stoc osc mengindikasikan pola Uptrend.

### The team contribution to this report:

**Ike Widiawati | Deputy Head of Research**

ike.widiawati@sinarmassekuritas.co.id

**Eddy Wijaya | Technical Analyst**

eddy.wijaya@sinarmassekuritas.co.id

**Aryana Paramita | Equity Analyst**

aryana.paramita@sinarmassekuritas.co.id

Banking, Media

**Axel Leonardo | Research Management Trainee**

axel.leonardo@sinarmassekuritas.co.id

Plantation, Coal Mining

### Technical analysis:

Technical Analysis uses historic market prices in order to assess market conditions. The historic data is analyzed by chart reading i.e. by following chart patterns and interpreting indicators calculated from historic price movements. **Technical Analysis may be inconsistent with and reach different conclusions to fundamental analysis.** It may vary at any time due to the different tools used to assess market conditions and recommendations.

### Rating system for technical analysis:

Buy	Investors are expected to buy at predetermined entry points.
Buy on weakness (BoW)	This strategy is derived from the basic concept of buy low, sell high, and may also be referred to as buy a retracement or buy at support.
Hold	Before providing hold recommendations with technical analysis methods, we always precede it by providing 'Buy' or 'Buy on Weakness (BoW)' recommendations. If the entry point in the 'Buy' or 'Buy on Weakness (BoW)' recommendation has been touched and the price still has upside potential, then we provide a <b>Hold</b> recommendation.
Reduce	Expected to decline, unless otherwise stated.
Take Profit	If the stock price has reached the target or if it fails to stay above the support level

Be careful if the price fails to break through or turn around the support area or if the price closed below support level.

**Pg.5 Weekly Recommendation Strategy**, Expected to advance by at least  $\pm 7\%$  in the coming 3-5 weeks, unless otherwise state

**Pg.6-7 Daily Recommendation Strategy**, Expected to advance by at least  $\pm 3\%$  in the coming 1-5 days, unless otherwise state

Sinarmas's research reports made are available on our own mobile apps "**SimInvest**", the research content is also distributed on e-mailed or our website official <https://www.sinarmassekuritas.co.id/riset>. If any data discrepancies in this report could be the result of different on the research methodology used by Sinarmas Research Team and/or adjustments etc. The Price Information, unless otherwise stated, the price information reflects the closing price of the previous trading day.

## **Disclaimer & legal information:**

### **GENERAL, RISK, FORECASTS REFERRED TO...**

This material is issued by PT Sinarmas Sekuritas, a member of Indonesia Stock Exchanges, represent the opinion of Sinarmas Sekuritas, derived its judgment from sources deemed reliable, however, PT Sinarmas Sekuritas and its affiliated cannot guarantee its accuracy and completeness. Important sources for the production of this document are e.g. Indonesia Stock Exchange & Central Bank of Indonesia, national and international media & information services (e.g. Bloomberg Finance L.P), publicly available databases, economic journals and newspapers (e.g. Bisnis Indonesia, Kontan, Investor Daily), publicly available company information and publications of rating agencies.

All information and data used for this document relate to past or present circumstances and may change at any time without prior notice. Statements contained in this document regarding financial instruments or issuers of financial instruments relate to the time of the production of this document. Such statements are based on a multitude of factors which are subject to continuous change. A statement contained in this document may, thus, become inaccurate without this being published. Potential risk regarding statements and expectations expressed in this document may result from issuer specific and general (e.g. political, economic, market, etc.) developments.

### **SUITABILITY**

This document has been prepared without taking account of the objectives, financial situation or needs of any particular investor. Before entering into any transaction, investors should consider the suitability of the transaction to individual circumstances and objectives. Any investment or trading or other decision should only be made by the client after a thorough reading of the relevant product term sheet, subscription agreement, information memorandum, prospectus or other offering document relating to the issue of the securities or other financial instruments. This document should not be read in isolation without reference to the full research report.

### **IMPORTANT LEGAL INFORMATION**

PT Sinarmas Sekuritas or its affiliates may be involved in transactions contrary to any opinion herein or have positions in the securities recommended herein and may seek or will seek investment banking or other business relationships with the companies in this material. PT Sinarmas Sekuritas, its employees and its affiliates, expressly disclaim any and all liability for representation or warranties, expressed or implied, here in or omission there from or for any loss how so ever arising from any use of this material or its contents or otherwise arising in connection there with opinion expressed in this material are our present view and are subject to change without notice.

To the fullest extent allowed by law, Sinarmas Sekuritas shall not be liable for any direct, indirect or consequential losses, loss of profits, damages, costs or expenses incurred or suffered by any person or organization arising from reliance on or use of any information contained on this report. The information that we provide should not be construed in any manner whatsoever as, personalized advice.

**'This document is intended for information purposes only'**. For further information please contact our number +62 21 392 5550 or fax +62 21 392 2320.

### **PT Sinarmas Sekuritas**

Sinarmas Land Plaza Tower 3, 6th Fl.  
Jl. M.H. Thamrin no.51  
Tel. +62 21 392 5550  
Fax. +62 21 392 5540  
[research@sinarmassekuritas.co.id](mailto:research@sinarmassekuritas.co.id)