

Indonesia Market Headlines

Published on: Friday, August 5, 2022



Jakarta Composite Index

	7057.348	10.71	0.15%
Open	7,062.03		
Highest	7,075.56		
Lowest	7,025.05	MTD %	1.53
Mkt Cap (Rptr)	9,225.81	YTD %	7.23

Daily News

- Puradelta Lestari (**DMAS**) sepanjang 1H22 mencatatkan pendapatan usaha sebesar Rp1.1 triliun (+84.1% YoY) dan laba bersih sejumlah Rp660.0 miliar (+128.7% YoY).
- Merdeka Copper Gold (**MDKA**) memberikan pinjaman sebesar USD225.0 juta atau sekitar Rp3.4 triliun ke entitas anak PT Merdeka Battery Materials untuk keperluan transaksi.

LQ45 Stock Ranking

TOP GAINER					TOP LOSER					Number of stock:	
No.	Ticker	Last	1D%	5D%	No.	Ticker	Last	1D%	5D%	Down below 0%	
1	INTP	9,625	5.8	4.6	1	PGAS	1,630	(3.8)	(3.3)	16	
2	SMGR	6,750	4.2	5.1	2	ADRO	3,190	(3.6)	(2.7)	Unchanged Stock	5
3	TOWR	1,255	3.7	5.5	3	MDKA	3,970	(3.2)	(4.1)	Up Above 0%	24
4	BUKA	332	3.1	10.7	4	PTBA	4,110	(2.8)	(3.7)	Total	45
5	JPFA	1,500	2.7	(1.3)	5	MEDC	600	(2.4)	(2.4)		

Sectoral Indices Performance (Ch. Day %)

Cons. Non-Cyc.	0.18
Financials	(0.09)
Cons. Cyc.	0.76
Healthcare	(0.07)
Transportation	1.35
Technology	3.08
Infrastructure	0.61
Properties	0.01
Industrials	(0.47)
Basic Material	0.77
Energy	(2.57)

Net Trading Value (in Billion Rp)

Today Foreign	Net Buy
Net Trading Value	1123.24
Year 2022 Foreign	Net Buy
Net Trading Value	57,264

See pg. 8-10 for Technical Corner

World Indices Comparison

Indices Comparison

Country		Index		Percentage %			
				Day	Weekly	Montly	YTD
America	United States	INDU Index	32,727	(0.26)	0.61	5.68	(9.94)
	Canada	SPTSX Index	19,577	0.16	1.67	3.94	(7.75)
	Mexico	MEXBOL Index	46,916	(0.16)	(2.49)	(1.24)	(11.93)
EA	Ecuador	SX5E Index	3,755	0.59	2.80	11.75	(12.65)
	United Kingdom	UKX Index	7,448	0.03	1.40	6.02	0.86
	France	CAC Index	6,513	0.64	2.75	12.40	(8.94)
	Georgia	DAX Index	13,663	0.55	2.87	10.17	(13.99)
	Spain	IBEX Index	8,161	0.23	0.94	2.53	(6.34)
	Italy	FTSEMIB Index	22,646	0.31	3.25	9.37	(17.19)
	Niger	AEX Index	732	(0.40)	1.27	13.56	(8.32)
	Swaziland	SMI Index	11,203	0.21	1.32	4.67	(12.99)
Asia Pacific	Indonesia	JCI Index	7,057	0.15	1.45	5.28	7.23
	Australia	AS51 Index	6,975	(0.02)	0.72	5.52	(6.04)
	Switzerland	SHSZ300 Index	4,102	0.85	(1.64)	(8.64)	(16.98)
	Hong Kong	HSI Index	20,174	2.06	0.09	(7.68)	(13.78)
	India	SENSEX Index	58,299	(0.09)	2.53	9.72	0.08
	Pakistan	KSE100 Index	41,425	0.87	2.85	0.79	(7.11)
	Japan	NKY Index	27,932	0.69	0.71	5.96	(2.76)
	Morocco	FBMKLCI Index	1,508	1.15	0.77	4.36	(4.08)
	New Zealand	NZSE Index	1,863	0.26	2.02	6.66	(11.62)
	Philippines	PCOMP Index	6,483	0.82	1.63	2.74	(8.98)
	Slovenia	FSSTI Index	3,270	0.55	1.78	5.31	4.65
	Slovakia	KOSPI Index	2,473	0.47	1.62	6.39	(16.33)
	Taiwan	TWSE Index	14,702	(0.51)	(1.99)	2.46	(19.30)
	Thailand	SET Index	1,599	0.25	2.93	3.73	(3.55)
	Vietnam	VNINDEX Index	1,254	0.35	3.81	6.17	(16.29)

Market comment....

IHSG kemarin (04/08) ditutup menguat sebesar +0.15% ke level 7,057, meski sempat bergerak fluktuatif di zona merah. Penguatan tersebut inline dengan pergerakan bursa saham regional yang dipimpin bursa saham Hong Kong +1.96% dan Sri Lanka +1.84%. Sementara itu, data ISM Non-Manufacturing PMI Amerika Serikat menunjukkan angka yang lebih ekspansif. Hal ini menjadi persepsi positif bagi pergerakan pasar saham regional.

Latest in markets...

Market: Currencies and Commodity

Currency Spot Rate	Rate (IDR)	1-Day (%)	YTD (%)
USD/IDR	14,933	(0.13)	4.55
EUR/IDR	15,274	(0.38)	(5.60)
JPY/IDR	112	(1.01)	(10.30)
SGD/IDR	10,848	(0.22)	2.65
AUD/IDR	10,387	0.21	0.29
GBP/IDR	18,126	0.21	(6.20)

Commodities	Price	Chg last	YTD (%)
Crude Oil (USD/barrel)	88.44	(0.11)	17.59
Coal (USD/mn tons)	385.00	(2.16)	127.00
Natural Gas (USD/mmBtu)	8.19	0.81	119.52
Gold (USD/ounce)	1,792.78	0.08	(1.99)
Nickel (USD/mn tons)	22,210.00	(0.55)	7.00
Tins (USD/mn tons)	24,545.00	1.24	(36.84)
CPO (MYR/mn tons)	3,940.00	(1.13)	(23.63)
Rubber (JPY/kg)	239.50	0.17	7.50
Wheat (USD/bushel)	789.50	0.89	2.43
Corn (USD/bushel)	605.50	0.54	2.06

Economic Indicator

Global Economics	CB Rate	CPI YoY	GDP YoY
Indonesia	3.50	4.94	5.01
United States	2.50	9.10	1.60
Euro Area	0.50	8.90	4.00
United Kingdom	1.75	9.40	8.70
Japan	0.10	2.40	0.40
China	4.35	2.50	0.40

Government Bonds	Yield%	Chg%	YTD%
10 Year	7.22	0.04	13.05
15 Year	7.01	0.00	11.87
20 Year	7.25	0.00	2.42
30 Year	7.40	-0.04	8.37

Looking Ahead

Date	Event	Act	Prev	Cons/Forecast
Thu, 4 Aug 2022	US: Balance of Trade JUN	-\$79.6bn	-\$84.9bn	-\$80.1bn
	US: Initial Jobless Claims 30 JUL	260k	254k	259k
	ID: GDP Growth Rate QoQ Q2		-0.96%	3.44%
Fri, 5 Aug 2022	ID: GDP Growth Rate YoY Q2		5.01%	5.17%
	ID: Foreign Exchange Reserves JUL		\$136.4bn	%135.6bn
	US: Unemployment Rate JUL		3.6%	3.6%

Key point....

US: Balance of Trade JUN (Thu, 4 Aug 2022)

Balance of Trade US periode Jun-22 tercatat sebesar -\$76.6bn, lebih tinggi dari estimasi konsensus yang sebesar -\$80.1bn. Pada bulan sebelumnya, Balance of Trade US berada di level -\$84.9bn.

ID: GDP Growth Rate Q2 (Fri, 5 Aug 2022)

BPS Indonesia akan mengumumkan GDP Growth Rate periode Q2 yang diperkirakan konsensus sebesar 3.44% QoQ / 5.17% YoY, lebih tinggi dari periode sebelumnya (-0.96% QoQ / 5.01% YoY). Hal ini mengindikasikan pertumbuhan aktivitas ekonomi Indonesia.

Policies and Events Reshaping the Economy

Macro Update

- Lembaga Penjamin Simpanan per Mei 2022 mencatat jumlah rekening bank digital sebanyak 28.3 juta rekening (+8,000% YoY).
⇒ Mencerminkan makin banyak masyarakat yang masuk ke digital, dikarenakan transaksi yang lebih mudah dan efisiensi biaya.
- Kementerian Keuangan mencatat realisasi Penerimaan Negara Bukan Pajak per akhir 1H22 mencapai Rp281 triliun (+35.5% YoY). Hasil ini sudah mencapai 58.3% dari target yang ditetapkan.
⇒ Berdampak positif terhadap keuangan negara.

Source: Kontan, Investor Daily, etc and Sinarmas Sekuritas

Corporate News

Ticker	News	Prev.	P/E	Industry
DMAS	Puradelta Lestari (DMAS) sepanjang 1H22 mencatatkan pendapatan usaha sebesar Rp1.1 triliun (+84.1% YoY) dan laba bersih sejumlah Rp660.0 miliar (+128.7% YoY).	169	7.50	Real Estate Management & Development
MDKA	Merdeka Copper Gold (MDKA) memberikan pinjaman sebesar USD225.0 juta atau sekitar Rp3.4 triliun ke entitas anak PT Merdeka Battery Materials untuk keperluan transaksi.	3,970	56.74	Metals & Mining
ULTJ	Ultra Jaya Milk Industry (ULTJ) akan membagikan dividen sebesar Rp260 miliar atau setara Rp25 per lembar saham. Alokasi tersebut sekitar 20% dari torehan laba bersih tahun lalu Rp1,27 triliun.	1,475	11.91	Food Products
HMSP	HM Sampoerna (HMSP) melakukan transaksi afiliasi sebesar Rp15.9 triliun untuk pinjaman dan pembayaran royalti. Fasilitas bergulir tersebut berlaku hingga 1 September 2024 dengan tenor 24 bulan untuk setiap penarikan.	920	17.84	Tobacco

Source: Kontan, Investor Daily, etc and Sinarmas Sekuritas

The Tables of Fundamental Analysis

	Last Price	1-D %	5-D %	YTD %	PBV (x)	LDR (%)	NPL	NIM (%)	ROE (%)	CASA %
Financials										
BBCA	7,800	6.1	6.1	6.8	4.7	65.9	2.2	4.4	17.9	78.3
BBRI	4,360	-	-	6.1	2.3	93.3	3.0	7.5	18.1	63.1
BMRI	8,250	2.5	2.5	17.4	1.9	83.5	2.7	4.3	18.2	69.7
BBNI	8,000	2.2	2.2	18.5	1.2	82.6	3.7	4.0	12.1	69.4
BBTN	1,480	1.0	1.0	(14.5)	0.7	92.9	3.7	3.8	12.4	44.3
					2.2	83.6	3.1	4.8	15.8	65.0

	Last Price	1-D %	5-D %	YTD%	PBV (x)	PER (Trailing)	P/EBITDA	ROA (%)	ROE (%)	DER (%)
Comm. Services										
TLKM	4,550	7.3	7.3	12.6	3.7	17.6	5.6	9.5	23.4	47.5
TOWR	1,255	5.5	5.5	11.6	4.8	17.9	8.5	7.0	29.4	389.5
TBIG	3,180	2.9	2.9	7.8	7.1	40.1	13.1	4.0	17.9	300.6
EXCL	2,590	8.8	8.8	(18.3)	1.4	25.0	2.0	1.6	5.6	177.5
MNCN	945	(4.1)	(4.1)	5.0	0.7	4.9	3.1	12.6	15.9	20.1
					3.6	21.1	6.5	6.9	18.4	187.0

Materials										
MDKA	3,970	(4.1)	(4.1)	4.6	7.8	56.7	23.3	7.6	14.8	48.5
TPIA	9,350	-	-	27.6	4.6	208.3	56.3	1.3	2.4	36.8
BRPT	1,005	10.4	10.4	17.5	3.5	98.0	9.4	0.9	4.6	72.6
INTP	9,625	4.6	4.6	(20.5)	1.7	21.7	11.5	6.1	7.5	1.3
SMGR	6,750	5.1	5.1	(6.9)	1.1	19.4	4.9	2.7	6.0	42.4
ANTM	1,970	(1.5)	(1.5)	(12.4)	2.1	17.6	10.6	8.4	12.8	28.9
INKP	7,800	-	-	(0.3)	0.6	5.1	2.3	6.3	12.1	72.4
INCO	6,100	(1.2)	(1.2)	30.3	1.8	15.8	8.1	10.4	11.8	0.2
TKIM	6,375	(0.4)	(0.4)	(15.3)	0.7	5.4	9.8	8.0	14.5	61.5
TINS	1,450	(3.7)	(3.7)	(0.3)	1.5	5.7	2.9	13.5	31.4	64.8
					2.5	45.4	13.9	6.5	11.8	42.9

Consumer Staples										
CPIN	5,825	1.3	1.3	(2.1)	3.7	29.7	17.1	8.7	12.3	25.0
INDF	6,650	(3.6)	(3.6)	5.1	1.1	7.1	2.8	4.6	17.2	71.6
UNVR	4,600	2.0	2.0	11.9	38.4	28.6	19.1	29.0	143.2	63.3
ICBP	8,925	(0.6)	(0.6)	2.6	2.9	15.8	7.9	5.8	19.5	76.3
GGRM	25,675	(10.1)	(10.1)	(16.1)	0.9	11.6	5.7	5.2	7.3	17.0
JPFA	1,500	(1.3)	(1.3)	(12.8)	1.4	10.9	4.3	5.1	13.1	77.6
HMSP	920	(2.1)	(2.1)	(4.7)	4.3	17.8	12.5	13.9	23.9	1.2

The Tables of Fundamental Analysis

	Last Price	1-D %	5-D %	YTD%	PBV (x)	PER (Trailing)	P/EBITDA	ROA (%)	ROE (%)
Cons.Discre									
ASII	6,600	9.1	9.1	15.8	1.5	9.1	5.7	7.9	17.1
BUKA	332	10.7	10.7	(22.8)	1.1			40.6	43.7
ACES	650	(7.8)	(7.8)	(49.2)	2.1	16.6	8.5	9.0	13.0
					1.5	12.8	7.1	19.2	24.6
Energy									
UNTR	33,200	6.1	6.1	49.9	1.6	7.7	4.0	13.7	22.6
ADRO	3,190	(2.7)	(2.7)	41.8	1.5	5.3	2.7	17.9	30.0
PTBA	4,110	(3.7)	(3.7)	51.7	1.8	4.8	3.4	30.5	44.3
ITMG	39,400	0.6	0.6	93.1	2.4	4.5	2.7	40.7	60.8
AKRA	1,265	9.1	9.1	53.9	2.5	16.5	10.9	6.3	16.0
MEDC	600	(2.4)	(2.4)	28.8	0.9		1.2	2.0	11.8
					1.8	7.8	4.1	18.5	30.9
Health Care									
KLBF	1,595	(4.5)	(4.5)	(1.2)	3.9	22.4	15.2	13.7	18.0
MIKA	2,610	0.4	0.4	15.5	7.3	32.1	21.6	16.9	21.8
					5.6	27.3	18.4	15.3	19.9
Industrials									
JSMR	4,110	(3.6)	(3.6)	(11.3)	1.2	13.6	2.9	1.8	9.2
WIKA	39,400	-	-	(15.4)	0.6	205.3	7.8	0.1	0.3
PTPP	1,265	1.6	1.6	(6.6)	0.5	22.1	3.5	0.5	2.4
					0.8	80.3	4.7	0.8	4.0
Utilities									
PGAS	1,630	(3.3)	(3.3)	18.5	1.0	7.3	2.8	4.8	14.6
					1.0	7.3	2.8	4.8	14.6
Real Estate									
BSDE	915	(0.5)	(0.5)	(9.4)	0.6	16.9	7.0	1.8	3.6
PWON	460	-	-	(0.9)	1.3	14.6	8.0	5.4	9.7
					1.0	15.8	7.5	3.6	6.7
IT									
ERAA	498	-	-	(17.0)	1.2	7.6	3.7	7.9	17.0
					1.2	7.6	3.7	7.9	17.0

The Tables of Technicals

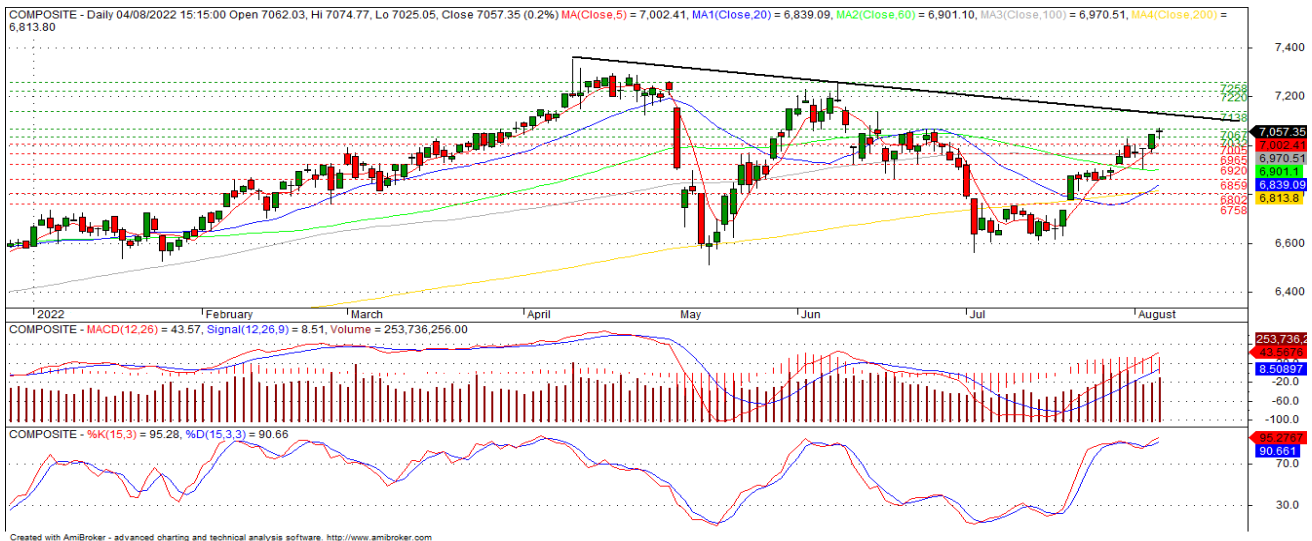
Technical (LQ45 | Feb-July)

No	Ticker	Last	Percentage %				MA5	RSI Rec	MACD Trend	Support		Resistance		Stop Loss
			Day	Weekly	Monthly	YtD%				1	2	1	2	
	JCI	7,047	0.84	2.15	6.30	7.2	Negatif	OverBought	Positif	6,975	6,950	7,050	7,100	6,825
1	BBCA	7,625	0.3	6.1	5.2	6.8	Negatif	OverBought	Positif	7,600	7,575	7,650	7,675	7,450
2	BBRI	4,380	(0.5)	-	5.8	6.1	Negatif	OverBought	Positif	4,360	4,320	4,430	4,460	4,255
3	TLKM	4,500	1.1	7.3	11.9	12.6	Negatif	OverBought	Positif	4,385	4,310	4,565	4,670	4,245
4	BMRI	8,250	0.9	2.5	8.6	17.4	Negatif	Trading	Positif	8,125	7,975	8,325	8,375	7,850
5	ASII	6,600	1.9	9.1	1.1	15.8	Negatif	Trading	Positif	6,425	6,275	6,650	6,725	6,175
6	BBNI	8,125	0.6	2.2	3.5	18.5	Negatif	OverBought	Positif	8,050	7,975	8,175	8,225	7,850
7	MDKA	4,100	(0.2)	(4.1)	3.5	4.6	Negatif	Trading	Positif	4,015	3,960	4,135	4,200	3,900
8	CPIN	5,900	-	1.3	(0.4)	(2.1)	Positif	Trading	Negatif	5,775	5,600	6,025	6,100	5,500
9	UNTR	33,950	3.3	6.1	28.1	49.9	Negatif	OverBought	Positif	32,600	31,925	33,975	34,675	31,450
10	KLBF	1,590	-	(4.5)	(5.6)	(1.2)	Positif	Oversold	Negatif	1,580	1,565	1,605	1,615	1,540
11	ADRO	3,310	4.1	(2.7)	21.7	41.8	Positif	Trading	Positif	3,175	3,105	3,325	3,405	3,055
12	INDF	6,575	(1.9)	(3.6)	(6.4)	5.1	Positif	Oversold	Negatif	6,550	6,475	6,700	6,775	6,375
13	TOWR	1,210	2.1	5.5	10.5	11.6	Positif	OverBought	Negatif	1,175	1,150	1,225	1,250	1,135
14	TPIA	9,275	0.3	-	6.0	27.6	Positif	Trading	Positif	9,150	9,025	9,350	9,425	8,875
15	TBIG	3,100	-	2.9	6.5	7.8	Positif	Trading	Negatif	3,055	3,025	3,155	3,225	2,975
16	UNVR	4,590	(0.2)	2.0	(5.0)	11.9	Positif	Trading	Negatif	4,570	4,535	4,620	4,635	4,465
17	BRPT	995	4.2	10.4	36.3	17.5	Negatif	OverBought	Positif	955	930	1,000	1,020	915
18	INTP	9,100	(0.5)	4.6	(3.2)	(20.5)	Positif	Trading	Positif	9,050	8,975	9,250	9,375	8,825
19	SMGR	6,475	0.4	5.1	(5.8)	(6.9)	Negatif	Trading	Positif	6,450	6,375	6,550	6,575	6,275
20	BUKA	322	8.1	10.7	21.1	(22.8)	Negatif	Trading	Positif	297	285	325	341	280
21	ICBP	8,800	(1.9)	(0.6)	(5.9)	2.6	Positif	Trading	Negatif	8,775	8,625	9,000	9,075	8,500
22	ANTM	1,970	(1.3)	(1.5)	12.6	(12.4)	Negatif	Trading	Positif	1,935	1,890	2,010	2,040	1,860
23	INKP	7,675	-	-	3.4	(0.3)	Positif	Trading	Positif	7,575	7,525	7,700	7,775	7,400
24	PGAS	1,695	1.2	(3.3)	5.9	18.5	Negatif	Trading	Positif	1,665	1,645	1,705	1,725	1,620
25	MIKA	2,610	0.4	0.4	(3.3)	15.5	Positif	Trading	Negatif	2,575	2,525	2,645	2,665	2,485
26	EXCL	2,580	7.5	8.8	0.8	(18.3)	Negatif	Trading	Positif	2,370	2,255	2,610	2,735	2,220
27	PTBA	4,230	1.0	(3.7)	13.7	51.7	Positif	Trading	Positif	4,175	4,145	4,255	4,305	4,080
28	GGRM	25,100	(1.8)	(10.1)	(20.4)	(16.1)	Positif	Strong Buy	Negatif	25,050	24,750	25,625	25,900	24,375
29	INCO	6,100	0.8	(1.2)	14.0	30.3	Negatif	Trading	Positif	5,850	5,700	6,150	6,300	5,625
30	ACES	655	(5.1)	(7.8)	(15.5)	(49.2)	Positif	Oversold	Positif	655	635	695	715	625
31	JPFA	1,460	(1.0)	(1.3)	(5.8)	(12.8)	Positif	Trading	Negatif	1,455	1,440	1,485	1,500	1,415
32	JSMR	3,480	0.9	(3.6)	(0.6)	(11.3)	Negatif	Oversold	Positif	3,450	3,435	3,500	3,535	3,385
33	HMSP	910	-	(2.1)	(6.7)	(4.7)	Positif	Oversold	Negatif	900	890	920	930	875
34	MNCN	955	(2.1)	(4.1)	1.6	5.0	Negatif	Trading	Positif	940	915	990	1,015	900
35	BSDE	910	1.1	(0.5)	1.1	(9.4)	Negatif	Trading	Positif	905	895	920	925	885
36	ITMG	40,250	1.3	0.6	34.1	93.1	Negatif	OverBought	Positif	39,575	39,250	40,425	40,950	38,650
37	BBTN	1,490	0.7	1.0	4.9	(14.5)	Negatif	Trading	Positif	1,475	1,465	1,495	1,505	1,440
38	PWON	464	0.9	-	1.3	(0.9)	Negatif	Trading	Positif	455	450	471	482	443
39	TKIM	6,325	0.4	(0.4)	(0.4)	(15.3)	Negatif	Trading	Positif	6,300	6,250	6,375	6,400	6,150
40	AKRA	1,285	2.8	9.1	33.9	53.9	Negatif	OverBought	Positif	1,235	1,190	1,305	1,330	1,175
41	ERAA	494	0.4	-	(3.1)	(17.0)	Positif	Trading	Positif	490	487	496	499	480
42	TINS	1,460	(1.0)	(3.7)	5.4	(0.3)	Negatif	Trading	Positif	1,445	1,420	1,485	1,500	1,400
43	WIKA	925	0.5	-	(2.6)	(15.4)	Positif	Trading	Positif	920	915	930	935	900
44	MEDC	615	2.5	(2.4)	3.4	28.8	Negatif	Trading	Positif	595	585	620	635	575
45	PTPP	905	-	1.6	(2.7)	(6.6)	Negatif	Trading	Positif	900	895	915	925	880

Source: Sinarmas Investment Research

JCI & Technical Corner

Jakarta Composite Index (JCI)



JCI pada hari ini kami perkirakan bergerak **MIXED MENGUAT** dengan range 7,005 – 7,102. JCI bertahan diatas Resistance 7,032 berpeluang mencoba next Resistance 7,067 dan 7,102. Namun, bila JCI tidak bertahan di atas Resistance 7,032, akan menguji Support 7,005 dan 6,965.

Support : 7,005 – 6,965

Resistance : 7,067 – 7,102

Review and Update of “Weekly Recommendation” Strategy

Stock Recom.	Recommendation	Trading Strategy
BBCA	TAKE PROFIT	BBCA, sudah mencapai target price 7,750 (4/8) kami merekomendasikan Take Profit. Namun, bila BBCA bertahan diatas Resistance 7,750, berpeluang melanjutkan penguatan dengan mencoba next Resistance 7,850 dan 7,950. Indikator Macd mengindikasikan pola Uptrend dan Stoc osc mengindikasikan pola Overbought.
PTBA	REDUCE	PTBA sudah mengenai batas Stop Loss 4,120 (4/8) kami merekomendasikan Reduce terlebih dahulu. PTBA breakdown Support 4,120 berkemungkinan melanjutkan pelemahan dengan menguji next Support 4,080 dan 4,040. Indikator MACD dan Stoc osc mulai membentuk pola Downtrend.
PGAS	HOLD	PGAS breakdown Support 1,655, berpeluang melanjutkan pelemahan dengan menguji next Support 1,625 dan 1,600. Namun, bila PGAS bertahan diatas Support 1,655 berkemungkinan mencoba Resistance 1,680 dan 1,700. Indikator Macd dan Stoc osc mengindikasikan pola Downtrend.

Source: Sinarmas Investment Research

Technical Corner for 'Daily Recommendation' Strategy

Trading Buy

Semen Indonesia (SMGR)



Last price	: 6,750	Support	: 6,525, 6,425
Target price	: 7,000 (+3,7%)	Resistance	: 6,900, 7,000
Entry price	: 6,750	Stop Loss	: 6,525 (-3,3%)

Trading Strategy:

SMGR, breakout Resistance 6,600, berpotensi melanjutkan penguatan dengan mencoba next Resistance 6,900 dan 7,000. Namun, bila **SMGR** tidak bertahan diatas Resistance 6,600, akan menguji Support 6,525 dan 6,425. Indikator MACD dan Stoc osc mengindikasikan pola Uptrend.

Spec Buy

Astra Otoparts (AUTO)



Last price	: 1,205	Support	: 1,190, 1,165
Target price	: 1,235 (+3,3%)	Resistance	: 1,220, 1,235
Entry price	: 1,195	Stop Loss	: 1,165 (-2,5%)

Trading Strategy:

AUTO, bertahan pada Resistance 1,205, berpotensi melanjutkan penguatan dengan mencoba next Resistance 1,220 dan 1,235. Namun, bila **AUTO** tidak bertahan diatas Resistance 1,205, akan menguji Support 1,190 dan 1,165. Indikator MACD dan Stoc osc mengindikasikan pola Uptrend.

Technical Corner for 'Daily Recommendation' Strategy

BOW

Bank Negara Indonesia (BBNI)



Last price	: 8,000	Support	: 7,825, 7,725
Target price	: 8,175 (+3,2%)	Resistance	: 8,175, 8,300
Entry price	: 7,925	Stop Loss	: 7,725 (-2,5%)

Trading Strategy:

BBNI, breakdown Resistance 8,050, berpeluang menguji Support 7,825 dan 7,725. Namun, bila **BBNI** bertahan diatas Resistance 8,050, akan mencoba next Resistance 8,175 dan 8,300. Indikator MACD mengindikasikan pola Uptrend dan Stoc ocs mengindikasikan pola Overbought.

BOW

Puradelta Lestari (DMAS)



Last price	: 169	Support	: 165, 160
Target price	: 174 (+5,5%)	Resistance	: 174, 177
Entry price	: 165	Stop Loss	: 160 (-3,0%)

Trading Strategy:

DMAS, breakout Resistance 167, berpeluang melanjutkan penguatan dengan mencoba next Resistance 174 dan 177. Namun, bila **DMAS** tidak bertahan diatas Resistance 167, akan menguji Support 165 dan 160. Indikator MACD dan Stoc osc mengindikasikan pola Uptrend.

The team contribution to this report:

Ike Widiawati | Deputy Head of Research

ike.widiawati@sinarmassekuritas.co.id

Eddy Wijaya | Technical Analyst

eddy.wijaya@sinarmassekuritas.co.id

Aryana Paramita | Equity Analyst

aryana.paramita@sinarmassekuritas.co.id

Banking, Media

Axel Leonardo | Research Management Trainee

axel.leonardo@sinarmassekuritas.co.id

Plantation, Coal Mining

Technical analysis:

Technical Analysis uses historic market prices in order to assess market conditions. The historic data is analyzed by chart reading i.e. by following chart patterns and interpreting indicators calculated from historic price movements. **Technical Analysis may be inconsistent with and reach different conclusions to fundamental analysis.** It may vary at any time due to the different tools used to assess market conditions and recommendations.

Rating system for technical analysis:

Buy	Investors are expected to buy at predetermined entry points.
Buy on weakness (BoW)	This strategy is derived from the basic concept of buy low, sell high, and may also be referred to as buy a retracement or buy at support.
Hold	Before providing hold recommendations with technical analysis methods, we always precede it by providing 'Buy' or 'Buy on Weakness (BoW)' recommendations. If the entry point in the 'Buy' or 'Buy on Weakness (BoW)' recommendation has been touched and the price still has upside potential, then we provide a Hold recommendation.
Reduce	Expected to decline, unless otherwise stated.
Take Profit	If the stock price has reached the target or if it fails to stay above the support level

Be careful if the price fails to break through or turn around the support area or if the price closed below support level.

Pg.5 Weekly Recommendation Strategy, Expected to advance by at least $\pm 7\%$ in the coming 3-5 weeks, unless otherwise state

Pg.6-7 Daily Recommendation Strategy, Expected to advance by at least $\pm 3\%$ in the coming 1-5 days, unless otherwise state

Sinarmas's research reports made are available on our own mobile apps "**SimInvest**", the research content is also distributed on e-mailed or our website official <https://www.sinarmassekuritas.co.id/riset>. If any data discrepancies in this report could be the result of different on the research methodology used by Sinarmas Research Team and/or adjustments etc. The Price Information, unless otherwise stated, the price information reflects the closing price of the previous trading day.

Disclaimer & legal information:

GENERAL, RISK, FORECASTS REFERRED TO...

This material is issued by PT Sinarmas Sekuritas, a member of Indonesia Stock Exchanges, represent the opinion of Sinarmas Sekuritas, derived its judgment from sources deemed reliable, however, PT Sinarmas Sekuritas and its affiliated cannot guarantee its accuracy and completeness. Important sources for the production of this document are e.g. Indonesia Stock Exchange & Central Bank of Indonesia, national and international media & information services (e.g. Bloomberg Finance L.P), publicly available databases, economic journals and newspapers (e.g. Bisnis Indonesia, Kontan, Investor Daily), publicly available company information and publications of rating agencies.

All information and data used for this document relate to past or present circumstances and may change at any time without prior notice. Statements contained in this document regarding financial instruments or issuers of financial instruments relate to the time of the production of this document. Such statements are based on a multitude of factors which are subject to continuous change. A statement contained in this document may, thus, become inaccurate without this being published. Potential risk regarding statements and expectations expressed in this document may result from issuer specific and general (e.g. political, economic, market, etc.) developments.

SUITABILITY

This document has been prepared without taking account of the objectives, financial situation or needs of any particular investor. Before entering into any transaction, investors should consider the suitability of the transaction to individual circumstances and objectives. Any investment or trading or other decision should only be made by the client after a thorough reading of the relevant product term sheet, subscription agreement, information memorandum, prospectus or other offering document relating to the issue of the securities or other financial instruments. This document should not be read in isolation without reference to the full research report.

IMPORTANT LEGAL INFORMATION

PT Sinarmas Sekuritas or its affiliates may be involved in transactions contrary to any opinion herein or have positions in the securities recommended herein and may seek or will seek investment banking or other business relationships with the companies in this material. PT Sinarmas Sekuritas, its employees and its affiliates, expressly disclaim any and all liability for representation or warranties, expressed or implied, here in or omission there from or for any loss how so ever arising from any use of this material or its contents or otherwise arising in connection there with opinion expressed in this material are our present view and are subject to change without notice.

To the fullest extent allowed by law, Sinarmas Sekuritas shall not be liable for any direct, indirect or consequential losses, loss of profits, damages, costs or expenses incurred or suffered by any person or organization arising from reliance on or use of any information contained on this report. The information that we provide should not be construed in any manner whatsoever as, personalized advice.

'This document is intended for information purposes only'. For further information please contact our number +62 21 392 5550 or fax +62 21 392 2320.

PT Sinarmas Sekuritas

Sinarmas Land Plaza Tower 3, 6th Fl.
Jl. M.H. Thamrin no.51
Tel. +62 21 392 5550
Fax. +62 21 392 5540
research@sinarmassekuritas.co.id