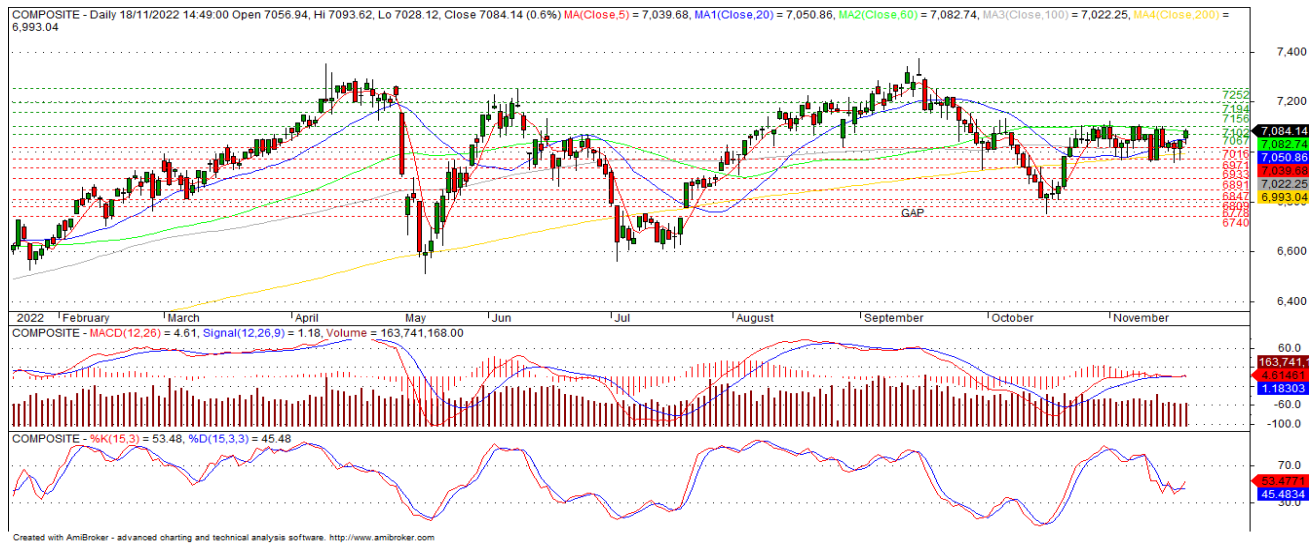


JCI & Technical Corner

Jakarta Composite Index (JCI)



JCI pada hari ini kami perkirakan bergerak **MIXED MENGUAT** dengan range 7,016 – 7,135. JCI breakout Resistance 7,067, berpeluang melanjutkan penguatan dengan mencoba next Resistance 7,102 dan 7,135. Namun, bila JCI breakdown Resistance 7,067, berkemungkinan menguji Support 7,016 dan 6,971.

Support : 7,016 — 6,971

Resistance : 7,102 — 7,135

Review and Update of “Weekly Recommendation” Strategy

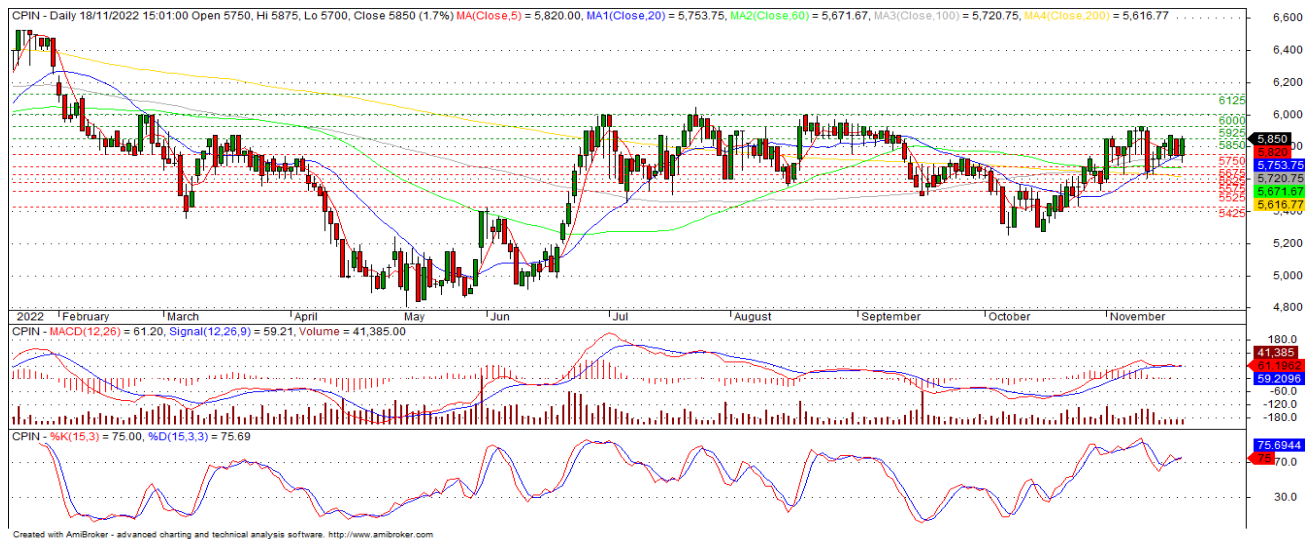
Stock	Recommendation	Trading Strategy
SIDO	HOLD	SIDO breakdown Resistance 760, berpeluang menguji Support 745 dan 730. Namun, bila SIDO breakout Resistance 760, berkemungkinan melanjutkan penguatan dengan mencoba next Resistance 780 dan 800. Indikator MACD mengindikasikan pola Uptrend dan Stoc osc mengindikasikan pola Downtrend. TP : 800, CL : 720
BBRI	HOLD	BBRI , breakdown Resistance 4,660, berpeluang menguji Support 4,590 dan 4,560. Namun, bila BBRI breakout Resistance 4,660, berkemungkinan melanjutkan penguatan dengan mencoba next Resistance 4,700 dan 4,760. Indikator MACD mengindikasikan pola Downtrend dan Stoc osc mulai membentuk pola Reversal. TP : 4,760, CL : 4,420
KLBF	TAKE PROFIT	KLBF , sudah mencapai Target price 2,050 (18/11) kami merekomendasikan Take Profit.. Namun, bila KLBF bertahan diatas Resistance 2,050, berkemungkinan melanjutkan penguatan dengan mencoba next Resistance 2,100 dan 2,150. Indikator MACD mulai membentuk pola Reversal dan Stoc osc mengindikasikan pola Uptrend.

Source: Sinarmas Investment Research

Technical Corner for 'Daily Recommendation' Strategy

BOW

Charoen Pokphand Indonesia (CPIN)



Last price	: 5,850	Support	: 5,800, 5,700
Target price	: 5,925 (+2,2%)	Resistance	: 5,925, 6,000
Entry price	: 5,800	Stop Loss	: 5,700 (-1,7%)

Trading Strategy:

CPIN, breakout Resistance 5,850, berpeluang melanjutkan penguatan dengan mencoba next Resistance 5,925 dan 6,000, Namun, bila **CPIN** breakdown Resistance 5,850, berkemungkinan menguji Support 5,800 dan 5,700. Indikator MACD mengindikasikan pola Sideways dan Stoc osc mengindikasikan pola Uptrend.

BOW

Indofood Sukses Makmur (INDF)



Last price	: 6,500	Support	: 6,425, 6,350
Target price	: 6,675 (+3,9%)	Resistance	: 6,550, 6,675
Entry price	: 6,425	Stop Loss	: 6,350 (-1,2%)

Trading Strategy:

INDF, breakout Resistance 6,475, berpeluang melanjutkan penguatan dengan mencoba next Resistance 6,550 dan 6,675. Namun, bila **INDF** tidak bertahan diatas Resistance 6,475, berkemungkinan menguji Support 6,425 dan 6,350. Indikator MACD mengindikasikan pola Sideways dan Stoc osc mengindikasikan pola Downtrend.

Technical Corner for 'Daily Recommendation' Strategy

Trading Buy

Surya Citra Media (SCMA)



Last price	: 260	Support	: 252, 246
Target price	: 274 (+5,4%)	Resistance	: 266, 274
Entry price	: 260	Stop Loss	: 252 (-3,1%)

Trading Strategy:

SCMA, bertahan pada Resistance 260, berpeluang melanjutkan penguatan dengan mencoba next Resistance 266 dan 274. Namun, bila **SCMA** breakdown Resistance 260, berkemungkinan menguji Support 252 dan 246. Indikator MACD mengindikasikan pola Uptrend dan Stoc osc mengindikasikan pola Downtrend.

Trading Buy

Semen Indonesia (SMGR)



Last price	: 7,725	Support	: 7,600, 7,525
Target price	: 7,950 (+2,9%)	Resistance	: 7,825, 7,950
Entry price	: 7,725	Stop Loss	: 7,600 (-1,6%)

Trading Strategy:

SMGR, breakout Resistance 7,700, berpeluang melanjutkan penguatan dengan mencoba next Resistance 7,825 dan 7,950. Namun, bila **SMGR** breakdown Resistance 7,700, berkemungkinan menguji Support 7,600 dan 7,525. Indikator MACD dan Stoc osc mengindikasikan pola Downtrend.

The team contribution to this report:

Ike Widiawati | Deputy Head of Research

ike.widiawati@sinarmassekuritas.co.id

Eddy Wijaya | Technical Analyst

eddy.wijaya@sinarmassekuritas.co.id

Mayang Anggita | Technical Analyst

mayang.anggita@sinarmassekuritas.co.id

Axel Leonardo | Equity Analyst

axel.leonardo@sinarmassekuritas.co.id

Plantation, Coal Mining

Michael Filbery | Equity Analyst

michael.filbery@sinarmassekuritas.co.id

Poultry, Cement, Toll Road

Mohit Lalchandani | Research Management Trainee

mohit.lalchandani@sinarmassekuritas.co.id

Aryo Prabu Kirono | Research Management Trainee

aryo.kirono@sinarmassekuritas.co.id

Martin Abram | Research Management Trainee

martin.abram@sinarmassekuritas.co.id

Technical analysis:

Technical Analysis uses historic market prices in order to assess market conditions. The historic data is analyzed by chart reading i.e. by following chart patterns and interpreting indicators calculated from historic price movements. **Technical Analysis may be inconsistent with and reach different conclusions to fundamental analysis.** It may vary at any time due to the different tools used to assess market conditions and recommendations.

Rating system for technical analysis:

Buy	Investors are expected to buy at predetermined entry points.
Buy on weakness (BoW)	This strategy is derived from the basic concept of buy low, sell high, and may also be referred to as buy a retracement or buy at support.
Hold	Before providing hold recommendations with technical analysis methods, we always precede it by providing 'Buy' or 'Buy on Weakness (BoW)' recommendations. If the entry point in the 'Buy' or 'Buy on Weakness (BoW)' recommendation has been touched and the price still has upside potential, then we provide a Hold recommendation.
Reduce	Expected to decline, unless otherwise stated.
Take Profit	If the stock price has reached the target or if it fails to stay above the support level

Be careful if the price fails to break through or turn around the support area or if the price closed below support level.

Pg.5 Weekly Recommendation Strategy, Expected to advance by at least $\pm 7\%$ in the coming 3-5 weeks, unless otherwise state

Pg.6-7 Daily Recommendation Strategy, Expected to advance by at least $\pm 3\%$ in the coming 1-5 days, unless otherwise state

Sinarmas's research reports made are available on our own mobile apps "**SimInvest**", the research content is also distributed on e-mailed or our website official <https://www.sinarmassekuritas.co.id/riset>. If any data discrepancies in this report could be the result of different on the research methodology used by Sinarmas Research Team and/or adjustments etc. The Price Information, unless otherwise stated, the price information reflects the closing price of the previous trading day.

Disclaimer & legal information:

GENERAL, RISK, FORECASTS REFERRED TO...

This material is issued by PT Sinarmas Sekuritas, a member of Indonesia Stock Exchanges, represent the opinion of Sinarmas Sekuritas, derived its judgment from sources deemed reliable, however, PT Sinarmas Sekuritas and its affiliated cannot guarantee its accuracy and completeness. Important sources for the production of this document are e.g. Indonesia Stock Exchange & Central Bank of Indonesia, national and international media & information services (e.g. Bloomberg Finance L.P), publicly available databases, economic journals and newspapers (e.g. Bisnis Indonesia, Kontan, Investor Daily), publicly available company information and publications of rating agencies.

All information and data used for this document relate to past or present circumstances and may change at any time without prior notice. Statements contained in this document regarding financial instruments or issuers of financial instruments relate to the time of the production of this document. Such statements are based on a multitude of factors which are subject to continuous change. A statement contained in this document may, thus, become inaccurate without this being published. Potential risk regarding statements and expectations expressed in this document may result from issuer specific and general (e.g. political, economic, market, etc.) developments.

SUITABILITY

This document has been prepared without taking account of the objectives, financial situation or needs of any particular investor. Before entering into any transaction, investors should consider the suitability of the transaction to individual circumstances and objectives. Any investment or trading or other decision should only be made by the client after a thorough reading of the relevant product term sheet, subscription agreement, information memorandum, prospectus or other offering document relating to the issue of the securities or other financial instruments. This document should not be read in isolation without reference to the full research report.

IMPORTANT LEGAL INFORMATION

PT Sinarmas Sekuritas or its affiliates may be involved in transactions contrary to any opinion herein or have positions in the securities recommended herein and may seek or will seek investment banking or other business relationships with the companies in this material. PT Sinarmas Sekuritas, its employees and its affiliates, expressly disclaim any and all liability for representation or warranties, expressed or implied, here in or omission there from or for any loss how so ever arising from any use of this material or its contents or otherwise arising in connection there with opinion expressed in this material are our present view and are subject to change without notice.

To the fullest extent allowed by law, Sinarmas Sekuritas shall not be liable for any direct, indirect or consequential losses, loss of profits, damages, costs or expenses incurred or suffered by any person or organization arising from reliance on or use of any information contained on this report. The information that we provide should not be construed in any manner whatsoever as, personalized advice.

'This document is intended for information purposes only'. For further information please contact our number +62 21 392 5550 or fax +62 21 392 2320.

PT Sinarmas Sekuritas

Sinarmas Land Plaza Tower 3, 6th Fl.
Jl. M.H. Thamrin no.51
Tel. +62 21 392 5550
Fax. +62 21 392 5540
research@sinarmassekuritas.co.id